



cubiform
baseline restrooms



INTRODUCTION

Cubiform Restrooms offer a washroom experience for high quality commercial applications. Beautifully simple in it's modular design, the Cubiform Restroom is unsurpassed in both quality and integrity.

Fully integrated system components include concealed hardware, total privacy flush face doors and pilasters, and integration with the Cubiform IPS Wall Lining System. With a wide range of colors, textures and finishes available, Cubiform Restrooms offer a range of natural and durable materials, delivering both visually stunning and high performance solutions without compromise.

The end result is a modular solution that is tailored to your unique aesthetic requirements. Wherever there is a need for washroom solutions, be it wood, HPL, CompactWood® or Phenolic, Cubiform Restrooms are the smart solution.

INLINE CONFIGURATION

FLUSH FACED DOORS & PILASTERS MAKE FOR A
CLEAN, MONOLITHIC FINISH



OFFSET CONFIGURATION

OFFSET DOORS & PILASTERS ARE QUICK TO
INSTALL



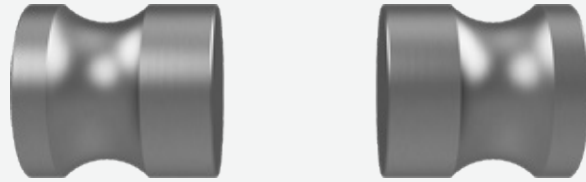
TYPICAL PANEL ARRANGEMENT

Doors, Pilasters and Divider panels are standard 72" height (available up to 120" high). The doors and pilasters are precision machined so as to eliminate sight lines. Inline configuration provides doors and pilaster faces flush with one another. Offset configuration provides in-swing doors mounted to the back face of pilasters and out swing doors mounted to the front face of pilasters. The pedestal support provides adjustable ground clearance and keeps contact with the floor to the absolute minimum. This combination provides the most private, secure and clean restroom compartments available.



DOOR PULL

The door pull is supplied as a pack of two stainless steel door pulls. For outswing doors only



INDICATOR LOCK & KEEP

The Stainless Steel Door Lock contains a rotary indicator latch, which is operated by a rotating handle, that in the horizontal position locks the cubicle.

The Stainless Steel Indicator Latch Assembly is equipped with a red and white Occupied / Unoccupied indicator, and with an external emergency release feature.

All necessary hardware and mounting screws are included.



DOOR HINGE

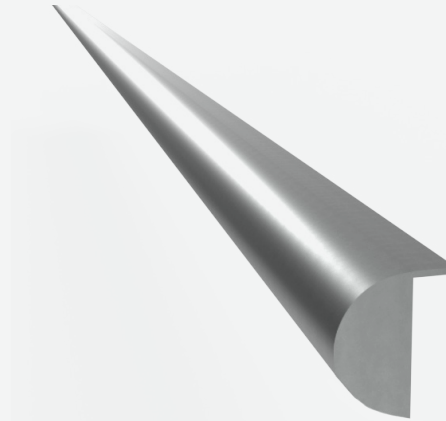
The door hinge is supplied as a pack of 2 stainless steel hinges. The pack contains one floating hinge and one rise and fall hinge. The hinge packs are handed to suit the door hanging and 1 hinge is pre-set closed, but fully adjustable to a 15 degree opening angle (Top Hinge).

The hinges are fixed using the hinge screws (Hardware Provided).



HEAD RAIL

The Cubicle D Head Rail is supplied in 118" lengths of anodized aluminum. This is fixed to the top of all pilaster's using Multi Purpose Screws supplied by installer. Ensure that the cut end of the headrail is positioned at the pilasters edge of the cubicle module or flush against existing walls.



PEDESTAL

The Pedestals attach to pilasters or dividers with a Connector Bolt, which is included.

Hardware supplied for floor mounting included but may not be applicable to all floor types.

Note: Standard pedestals from 4 7/8" to a 6" max pedestal height. Options available from 2" to 12".

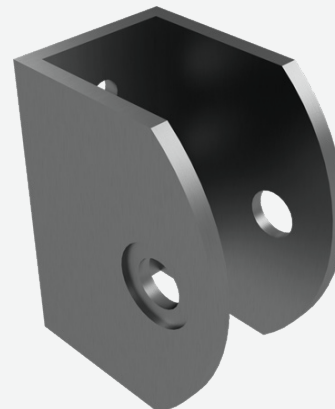


U-BRACKET

The Stainless Steel U - Bracket is used to fix the cubicle dividers pilasters to each other and existing walls.

Fixings incorporated include Tamper Proof Through Bolt for pilaster and divider and 3 Multi Purpose Screws, when fixing to an existing wall.

Hardware supplied for floor mounting included but may not be applicable to all floor types.



COMPACTWOOD®

Specie Selection:

18 standard species with over 100 custom species to choose from. Review color card for options.

Configuration:

Between Walls, Against Walls,
In Corner,
Ambulant, ADA

Door Types:

Flush Face, Full Height, Zero
Sight Lines

Ground Clearance:

6" / 150mm adjustable
Optional: 2" - 12"

Hardware:

Stainless Steel

Optional: Powder Coat
Aluminum



100 species to choose from, 18 in stock

Compactwood® offers all the benefits of phenolic with the beauty of natural real wood.

Cubiform CompactWood® is a natural choice to add warmth and richness to almost any environment. Made exclusively from quality veneers, and available in over 100 species and cuts, the design choice is endless. Market segments include Corporate, Hospitality, Retail, Healthcare, Education, Public Buildings such as Airports and Transit Stations and Sporting Facilities such as Stadiums. Beautifully simple in it's modular design, easy to specify, quick to install, and with a wide range of colors, textures and natural finishes, durable Cubiform Cubicles are unsurpassed in both quality and integrity.

COMPACT

Color Selection:

Over 600 solid colors, patterns and woodgrains to choose from with several texture options. Review color card at Carbonzerohpl.com

Configuration:

Between Walls, Against Walls, In Corner, Ambulant, ADA

Door Types:

Flush Face, Full Height, Zero Sight Lines

Ground Clearance:

6" / 150mm
adjustable
Optional: 2" - 12"

Hardware:

Stainless Steel

Optional: Powder Coat
Aluminum, Nylon.



Solid Colors, Patterns and Woodgrain Finishes

Cubiform Compact is the toughest and most hygienic surface for harsh restroom environments. No sight lines, full height doors and pilasters and adjustable ground clearance makes Cubiform cubicles the most private cubicles available.

Cubiform Compact is a natural choice to add warmth and richness to almost any environment. Available in over 600 Colors, Woodgrains and Abstracts the design choice is endless. Market segments include Corporate, Hospitality, Retail, Healthcare, Education, Public Buildings such as Airports and Transit Stations and Sporting Facilities such as Stadiums. Beautifully simple in it's modular design, easy to specify, quick to install, and with a wide range of colors, textures and natural finishes, durable Cubiform Cubicles are unsurpassed in both quality and integrity.

HPL

Color Selection:

Over 100 solid colors, patterns and woodgrains to choose from with several texture options. Review color card for options.

Configuration:

Between Walls, Against Walls, In Corner, Ambulant, ADA

Door Types:

Flush Face, Full Height, Zero Sight Lines

Ground Clearance:

6" / 150mm adjustable
Optional: 2" - 12"

Hardware:

Stainless Steel

Optional: Powder Coat
Aluminum, Nylon.

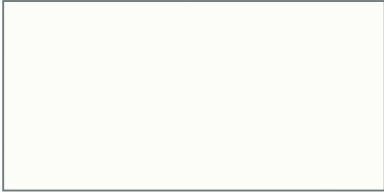


Solid Colors, Patterns and Woodgrain Finishes

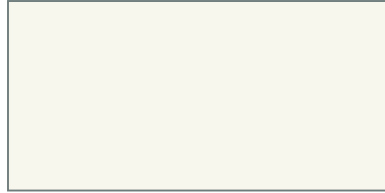
Cubiform HPL is a tough and hygienic surface for restroom environments. No sight lines, full height doors and pilasters and adjustable ground clearance makes Cubiform HPL cubicles the most private cubicles available.

Cubiform HPL is a natural choice to add warmth and richness to almost any environment. Available in over 600 Colors, Woodgrains and Abstracts, the design choice is endless. Market segments include Corporate, Hospitality, Retail, Healthcare, Education, Public Buildings such as Airports and Transit Stations and Sporting Facilities such as Stadiums. Beautifully simple in its modular design, easy to specify, quick to install, and with a wide range of colors, textures and natural finishes, durable Cubiform HPL cubicles are unsurpassed in both quality and integrity.

QUICK SHIP OPTIONS



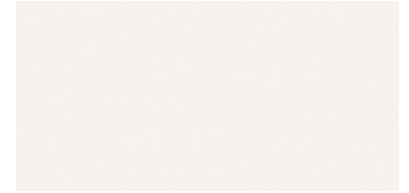
VANILLA
AAM1017



POLAR WHITE
AAM1018



CAFE
AAM1024



STRATUS
AAM1026



LEAD
AAM1176



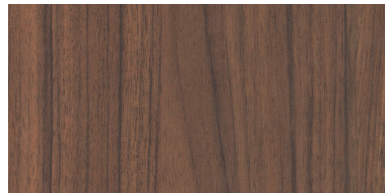
MODERN CONCRETE
AAM1056



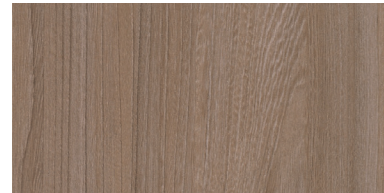
GREY OAK
AAM1110



DARK LARCH
AAM1115



TUSCAN WALNUT
AAM1122



OLIVE
AAM1127

100'S MORE COLORS

AVAILABLE FROM WWW.CARBONZEROHPL.COM, FOR INFORMATION PLEASE CONTACT: 844-307-9571



Beautifully Simple.
Unsurpassed in both
Quality and Integrity.
Cubiform.



AMERICAN
ARCHITECTURAL
MILLWORK



cubiform
baseline restrooms